

LGGMC Newsletter



Content

- [Look Forward to Feb 2024 Meeting](#)
- [Quick Take on Jan 2024 Meeting](#)
- [Pebble Pups & Earth Science Scholars Report](#)
- [Meet Our Neighbors](#)
- [Museum Events](#)
- [Earth Science Events](#)
- [Interesting Reads](#)
- [Mineral of the Month Quiz](#)
- [To Join Our Club](#)
- [Membership Application | Renewal](#)
- [About Us](#)
- [Club Officers](#)

Lake George Gem & Mineral Club CLUB NEWS February 2024

Look Forward to Feb 2024 Meeting

- Bob Carnien

Presentation: "Mineral Eye Candy from the Cripple Creek Mining District"

At the Oct 2023 meeting, a report was given on the geology and history of the Cripple Creek district. This presentation will be a follow on to the Oct presentation. Specifically, this will be a hands on look at a relative few specimens (of the overall 125 or so minerals found in the district) that are of a collector's interest. These include such rarities as large amethyst crystals, canary yellow fluorite, creedite with rhodochrosites, as well as spectacular gold and silver tellurides.

So get up close and personal to some of these at the Feb 2024 meeting and see what Cripple Creek has to offer to the mineral enthusiast!

Guest Speaker, Bob Carnein, Bio

From 2008 to 2024 Bob Carnein was the Newsletter Editor for the LGGMC. In 1970s through 1980s, Bob taught geology at Waynesburg College in southwestern PA. Included in his duties was the operation of the Waynesburg College Geology Field Station, which was housed every summer in a building behind the Thunderbird Motel in Florissant, CO. From 1989 through 2007, Bob taught a wide range of geology courses at Lock Haven University in central PA. He and his wife, Nell, whom Bob met in Lake George, CO, retired to a home near Divide, CO in 2007. Bob has a BS in geology, an MS in glaciology, and a PhD in geology, all from Ohio State University.



Quick Take on Jan 2024 Meeting

- Bob Carnein

- Approximately 25 members braved the weather to show up for the Jan 2024 Meeting.
- 2024 club officer candidates were introduced. A vote was taken and new officers were chosen.
- Dave Alexander presented information on field trips. Training is ongoing for volunteers to lead trips and help coordinate them. There are many ideas for trips that have been listed on the trip website but not all dates have been decided on.

Contact Us

Lake George Gem
& Mineral Club

Address
PO Box 171
Lake George, CO 80827

Website
<https://lggmclub.org/>
www.LGGMclub.org

Meeting Location
Lake George Charter School GYM
[Map to our Meeting Location](#)

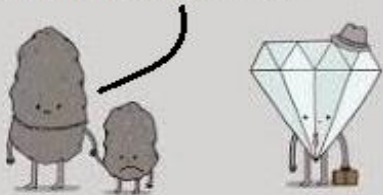
There is a confirmed date for a reclamation trip to the club claim.

- The meeting ended with the annual "Towel Show" where ~ 8 members brought minerals, fossils, and jewelry to share. Thanks to Dave Breuss, Laura Canini, Betty Merchant, Dan Mira and a couple of others whose names I can't remember for bringing and setting up your goodies. Overall, there were plenty of great items to look at. Here are some pictures:

Towel Show Display of 2023 Findings



Your dad has been under
a lot of pressure lately.

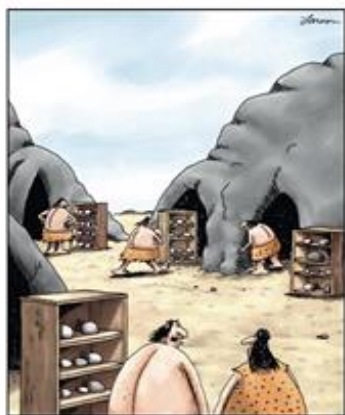


Pebble Pups & Earth Science Scholars Report - Betty Merchant

The Pebble Pups and Earth Science Scholars had a great discussion on what is a dinosaur in January and how they are classified. In February we will be talking about Quartz, the different types, chemical compositions and where they are found. We will also be discussing what is a fossil and how do they form. In March we will be talking about feldspars and other minerals found in Colorado. In April we will be discussing various land forms and using clay to build cede land forms. In May we will discuss erosion and streams, rivers and how they form.

"I've always wanted
to have a neighbor
just like YOU!"

- Mr. Rogers



"You know, I used to like this hobby. ...
But shoot! Seems like *everybody's* got a
rock collection."

The Club is looking for a new leadership to coordinate and work with our youth groups. John and Betty Merchant will be retiring at the end of this season. "These are great kids to work with, so hopefully the program can continue on with new leadership.

This year at the Lake George Gem and Mineral show we will be having an auction for the first time. Donations for that auction will be collected the first part of August. We will need a lot of help with this endeavor. Think about giving a couple of hours of your time to help out.

Meet Our Neighbors

Here is a list of nearby gem, mineral, fossil, and geology club meetings that you may enjoy. Go to each club's website for more information.

Cañon City Geology Club

Meets on the 2nd Monday of the month at 6PM in the United Methodist Church, Cañon City.

Columbine Gem & Mineral Society

Meets on the 2nd Thursday of each month, 6:30PM in the meeting room, Mt. Shavano Manor, 525 W. 16th (at J St.), Salida

Colorado Springs Mineralogical Society

Meets on the 3rd Thursday of each month at 7PM Colorado Springs Christian School, 4855 Mallow Rd, Colorado Springs.

Pueblo Rockhounds

Meets on the 3rd Thursday of each month at 6:30PM in the Westminster Presbyterian Church, 10 University Circle, Pueblo.

Museum Events

Denver Museum of Nature & Science

"After the Asteroid: Earth's Comeback Story"

(Daily exhibit)

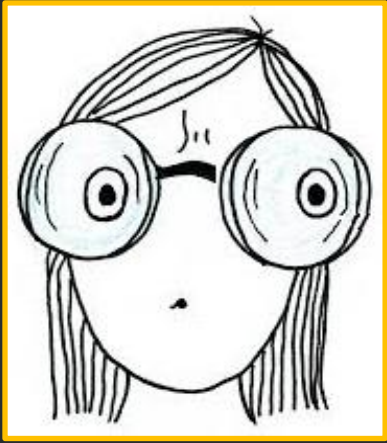
A newly discovered trove of remarkably preserved fossils, found at Corral Bluffs near Colorado Springs, has brought into sharp focus how Earth recovered after the devastating asteroid impact 66 million years ago that wiped out the dinosaurs. This discovery is a watershed scientific moment, and the Denver Museum of Nature & Science has created a brand-new bilingual exhibit to bring the discovery to life.

"Unearthing Painted Worlds: New Archeological Discoveries of the Moche Culture of Peru"

(Wednesday, Feb 21, 2024 7 pm to 9 pm).

Denver Museum of Nature and Science Curator, Dr. Michele Koons and conservator Megan Salas are a part of a team of scientists who have discovered an astonishing array of mural paintings dating to the late Moche period (ca. 600-800 CE) in the Nepeña Valley of Pañamarca Peru. Newly uncovered paintings portray strange beings — including a two-faced man never before documented in Moche art, women displaying colorful spun threads and weaving tools and extravagantly rich processions of well-dressed individuals. This exciting discovery includes images that are not typical of Moche art, and in fact, add a new understanding of multiculturalism in Moche society at the southern frontier. Join us

Today a Reader
Tomorrow a Leader!



Articles From
ROCK & GEM

for first-hand accounts of uncovering these mysterious and culturally significant murals and what they teach us about the Moche people.

Earth Science Events

[The 2024 Southern Colorado Rock & Mineral Show](#)

(May 3-5, 2024)

Demonstrations, vendors, presentations, rock auction, live music, beer garden, kids activities, supply sales, geology clubs, door prizes, food, gold mining tips, & much more!

Interesting Reads

Here are some fun rock, mineral, and geology news and information to enjoy from several of our favorite magazines.

“Healing Crystals vs. Rock Science”

Healing crystals or science? Many people collect gemstones for a variety of different reasons. Learn more about what makes both sides tick.

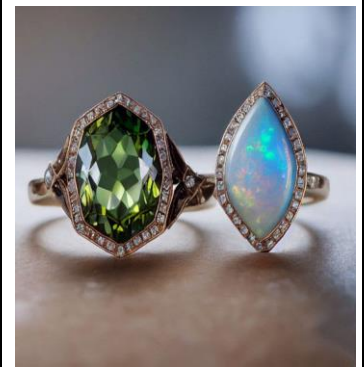
[Read More](#)



“Birthstones by Month: What is Yours?”

What are the birthstones by month? Do you know yours? Examine the precious gems associated with the 12 zodiac signs and alternatives to consider.

[Read More](#)



“Amethyst: Meaning & Uses”

Amethyst is a beautiful purple gemstone that's associated with calmness and clarity. Learn about amethyst's legend, lore and spiritual significance.

[Read More](#)



Articles From

ROCK SEEKER

“Best Crystals for Your Zodiac Sign”

Zodiac crystals are the crystals and stones that align with a Zodiac sign. Check out what crystals align with your sign and whether they are a favorite or not.

[Read More](#)



“Magnetite and it’s Many Incredible Different Uses”

Did you know research has shown that many migratory birds, fish, insects and mammals contain small quantities of biological magnetite crystals? Interesting, right? These tiny magnetite crystals are usually clustered near tissues linked to movement, navigation or spatial orientation. They essentially act like miniature compasses or magnetic field detectors thanks to magnetite's natural magnetism.

[Read More](#)



“Black Can Be a Very Beautiful Color!”

Black rocks and minerals possess an extremely unique allure that invites both interest and curiosity. Just because they share the same "shade", these stones vary widely in both composition and origin. From the glassy and volcanic obsidian to the lustrous, carbon-based coal, these dark-hued natural wonders play a very important role in our world, let alone appealing to look at.

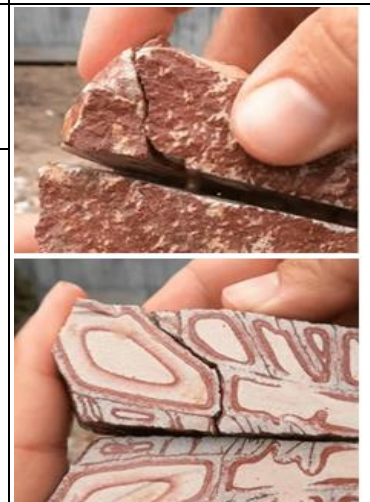
[Read More](#)



“Ordinary Rocks, Extraordinary Finds! Cutting Rocks Open With 'The Rugged Rockhound'”

Who knew that slicing open rocks could be such an exhilarating and addictive pastime? Well, the video that The Rugged Rockhound put together has shown us exactly how fun it can be! He is taken some of the rocks he has collected over the years and cuts them open to reveal what is inside.

[Read More](#)



Dreams in a River of Gold

Beside the meandering stream, a prospector worked his gold pan while water tumbled over smooth granite boulders.

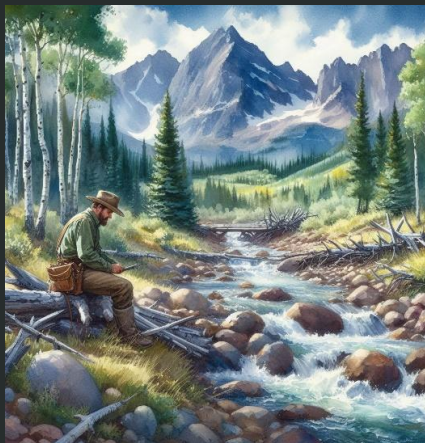
Here the mountain stream grew deeper in its channel and formed pools, a likely place for gold to settle.

The prospector tirelessly shoveled, sifted, screened, and panned—then picked gold nuggets from the black sand in his pan.

Laboring by the stream, he knew why he left home, saying goodbye—swapping his life for one on the frontier, a life of hardship, danger, and brutal work.

The reason was clear when he bedded down by a crackling campfire, under a cold sky filled with stars and a half-moon. As he slept, next to the stream, the aspens whispered dreams making a strike, taming a new land, and building the West.

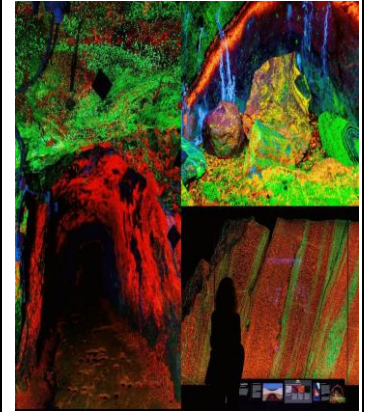
By Steven Wade Veatch



“Where You Can See the World’s Largest Collection of Fluorescent Rocks!”

The Sterling Hill Mining Museum, nestled in Ogdensburg, New Jersey, offers a glowing adventure unlike any other. If fluorescent rocks pique your interest, this is the place to see them in all their vivid glory. It’s a stone’s throw away from the small town of Franklin, globally renowned for its unique mineral fluorescence since the late 1960s.

[Read More](#)



“Neanderthals Were Rockhounds Too: Discovery Suggests a Prehistoric Obsession With Pretty Rocks”

Who knew that slicing open rocks could be such an exhilarating and addictive pastime? Well, the video that The Rugged Rockhound put together has shown us exactly how fun it can be! He is taken some of the rocks he has collected over the years and cuts them open to reveal what’s inside.

[Read More](#)



“\$25,000 For a Herkimer Diamond? This Quartz Crystal is Up For Grabs”

In 2011, an unusually large and high-quality Herkimer Diamond was discovered at the Ace of Diamonds Mine in Middleville, New York. Nicknamed ‘This specimen is a rarity and has been preserved in impeccable condition. Its uniqueness and condition make it a valuable find for collectors.

[Read More](#)



“The Minerals and Crystals Used in Ancient Cultures”

When archaeologists uncovered the 1,000-year-old mummy bundle of a powerful Sicán ruler in Peru, they made a startling discovery—over 1,500 polished agate gemstones adorning his funeral mantle. These prized stones did not occur near the tomb, but 50 miles away along the Río Udima, the sole nearby source for such vibrant multicolored agates.

[Read More](#)



Just.....One.....More.....Rock.....



And then we can leave.

“Agate – It’s Not What It Used To Be”

The term "agate" has had a very interesting change in definition over time. Traditionally, an agate referred to a banded chalcedony mineral with striking parallel color stripes, typically including your fortification and seam agates. So originally, the reference was reasonably narrow. But more recently, the description of an "agate" has expanded quite a bit. Today, it serves an all-encompassing label applied to all chalcedony specimens that include unique visual inclusions or color patterns as a result of their formation.

[Read More](#)



“Most Expensive Geode: Dethrones the Empress Uruguay”

A 16ft tall, 14-ton amethyst geode from Uruguay called “One of the World’s Largest Amethysts” sold for \$300k-\$400k, likely becoming the new most valuable geode.

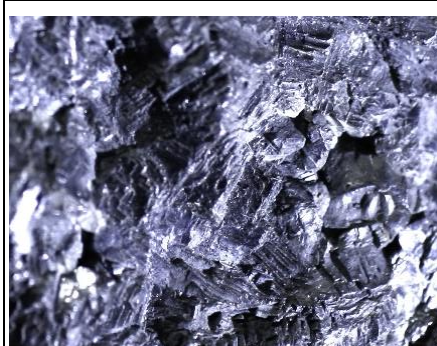
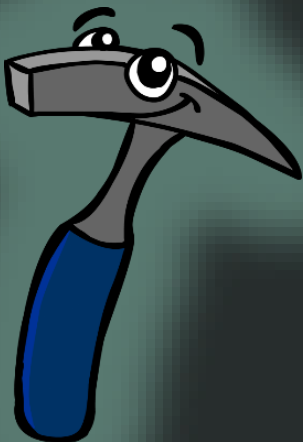
[Read More](#)



Mineral of the Month Quiz

– Bob Carnein

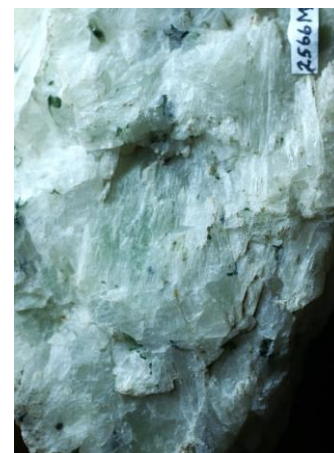
The monthly mineral for February is one that even beginners should know. It’s a major ore mineral of one base metal and often contains a precious metal as an impurity. Yes, it occurs in the isometric (cubic) crystal system. It also has cubic cleavage, metallic luster, and a high SG (7.6) and low H (~2.5). There are dozens of localities in Colorado, and you may have collected it wherever you’ve found sphalerite, pyrite, and/or chalcocopyrite (for example, near Westcliffe, in Custer Co.). Name this common ore mineral.





Last month's mineral: Wollastonite

Wollastonite (wool'-uh-stun-ite), $\text{Ca}_3(\text{Si}_3\text{O}_9)$ is one of those very common minerals that are hard to identify, especially for beginners. You should look for it wherever impure limestone has undergone high grade contact metamorphism. Common associated minerals are calcite, grossular, tremolite, diopside, and other calcium and magnesium carbonates and silicates. If you have visited the Gold City claim, you may have some in your collection. At that locality, as at many, it is fluorescent (but a not very impressive dirty cream color). It's generally light colored, has a moderate H (4 1/2-to 5) and SG (around 3) and exhibits several directions of cleavage (and therefore commonly is confused with tremolite). Crystals are rare, so most beginners ignore it. Wollastonite is named for William Wollaston, a famous British mineralogist and chemist who discovered palladium and rhodium, invented the reflecting goniometer (a device for measuring the angles between crystal faces), and the camera lucida.



To Join Our Club

Our organization is incorporated under Colorado law as a nonprofit educational organization, and is a member of the Colorado, Rocky Mountain, and American Federations of Mineralogical Societies. We gather monthly as a club to share information including guest speaker presentations, workshops, and rock specimen show and tell discussions. We coordinate and supervise amazing field trips for club members that cover a broad spectrum of geological, archeological, rock, and mineral interests. We also sponsor the annual Gem and Mineral Show at Lake George, where collectors and others may purchase or sell rocks, minerals, fossils, gems, or jewelry.

Annual membership dues are collected (Jan. 1 through Mar. 31). They are as follows:

LGGMC Annual Membership Dues 2024		
\$15.00	Individual	Age 18 and over
\$25.00	Family	Parents + dependents under age 18

NOTE:

New memberships and renewals are only accepted Jan 1 through March 31 each year!!

MARCH 2024

31

Last Day 2 JOIN !

CLUB OFFICER BIO

**(PRESIDENT)
David Bruess**

COLLECT ?

Mostly field collect in western US

COLLECTION SIZE ?

Extensive, from 40+ years. 85% from field; 15% purchase

MAIN INTEREST ?

Field collection of crystals + 25 years in lapidary. My shop includes rotary and vibratory tumblers, 2 flat laps, 16" slab saw, trim saw, and 8" cabbing machine.

COLLECTOR BEGINNINGS

?Started as a boy in the 60s, collecting Lake Superior agates along the banks of the Mississippi River. This ultimately led to a long career doing uranium exploration, oil and gas exploration and production, and fossil fuel procurement for fortune 500 electric utility company.

HOW LONG IN THE CLUB ?

Since I retired and moved to CO 3 years ago.

IDEAS FOR IMPROVING CLUB & INCREASING PARTICIPATION?

As president, my goal is to listen to what other club members would like to see and try to incorporate their inputs. My personal goal is to do my small part to keep the club prospering and hopefully, pass along some of my passion for the hobby to younger generations.

Membership Application | Renewal

Current year membership renewal and application occurs **January 1-March 31**, after which membership is closed for current year. Membership list will be purged April 1 for current year.

NOTE:

Membership must be current to participate on any field trip or use club claim.

Please visit our club website at <https://lggmclub.org> to obtain a membership application, or go directly to https://lggmclub.org/LGGMc_Member24v.pdf to download the application in PDF format. This application will need to be filled out and submitted to the club along with the appropriate membership dues. The mailing address to submit the application is provided in the "Contact Us" sideboard of this newsletter. Remember to get your application in before April 1, 2024!

About Us

The Lake George Gem and Mineral Club is a group of people interested in rocks and minerals, fossils, geology and history of the Pikes Peak/South Park area, Indian artifacts, and the great outdoors. The Club's informational programs and field trips provide opportunities to learn about Earth Science, rocks and minerals, fossils, lapidary work, jewelry making, and to share information and experiences with other members. Guests are welcome to attend, to see what we are about!

The Club is geared primarily to amateur collectors and artisans, with programs of interest both to beginners and serious amateurs. The Club normally meets on the second Saturday of each month at the Lake George Charter School gym, located on the south side of US Highway 24 approaching the town of Lake George from Florissant. In the winter, we meet at 10:00AM. From April through September, we meet at 9:00AM, to allow more time for our field trips. [Map to Lake George Charter School](#)

Club Officers

The LGGMC Officers for 2024 are as follows:

President	Dave Bruess	david@bruess.me
Vice President	Bart Zobel	bezobel@gmail.com
Secretary	Steve Kahler	pipprophet@gmail.com
Treasurer	Cathy McLaughlin	cathy_mclaughlin@hotmail.com
Newsletter	Betty Bowles	bbowles2@gmail.com
Field Trip Coordinator	Dave Bruess	david@bruess.me
Show Coordinator	Carol Kinate	kinatec@aol.com
Pebble Pups Coordinator	Betty Merchant	betty.merchant@yahoo.com

